



DW-MCC1
14 or 16 slots Chassis



Features

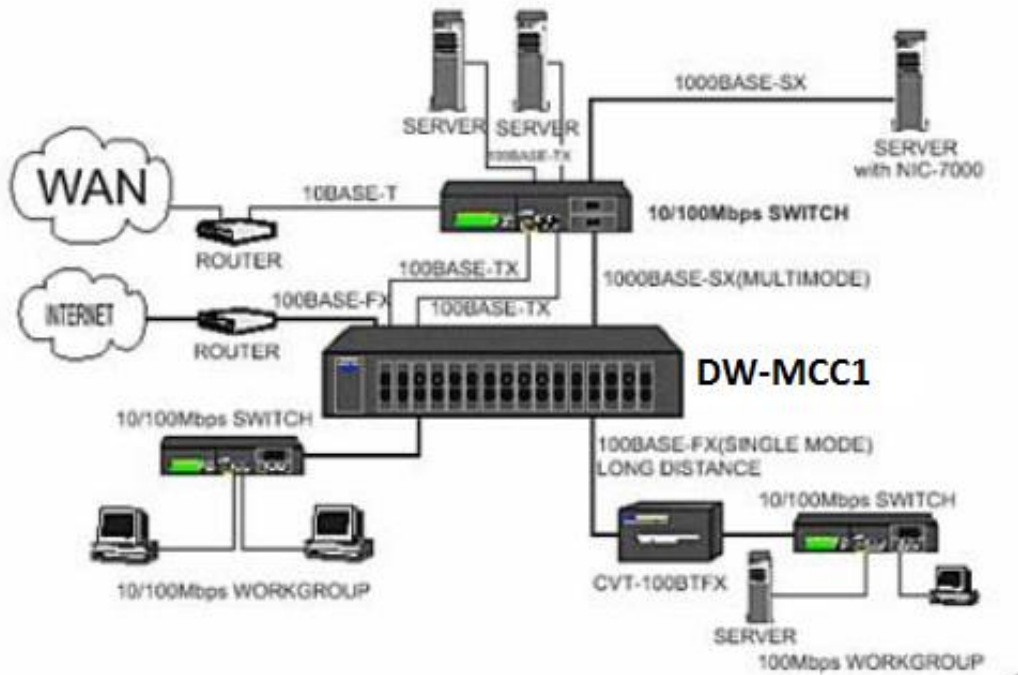
- ◆ Versatile chassis for multiple converter installations
- ◆ Fourteen/Sixteen front panel slots for FHC Media Converters
- ◆ 19-inch Rack Mount
- ◆ Optional redundant power supply
- ◆ Plug and Play Operation
- ◆ LED Indication for Primary and Secondary Power Supplies
- ◆ LED Indication for Converters
- ◆ Metal Case

Product description

DW-MCC1 is a 19-Inch rack mountable conversion center, capable of serving up to 14 pieces of media converters or 16 pieces of media conversion modules. In addition to the internal power supply, a back up supply is available as an optional extra. This unit and all conversion modules are CE and FCC-Class approved and they also conform to CCITT specifications.



Application



Specification:

Diagnostic LED	MB,MN
Safety Standards	UL,CSA,FCC Part 15 Class B, CE
Number of Ports	16 slots for DW-MC Series Media Converter
Dimension	294(W)*283(D)*100(H)mm
Weight	5kg(Net weight)
Power	Input 100-240V,150W,50-60Hz
Redundant Power	Input 100-240V or Input -48V for option
Operating Temperature	0°C~50°C
Storage Temperature	-40°C~+70°C
Humidity	5% to 90% non condensing

* For further reports, please contact us for update

Order Information:

Part Number	Discription
DW-MCC1	14/16 Slot Chassis for Media Converter